

PREMIUM SNOW MADE EASY

CM3 Specification

Standard equipment:

- » 20m 5G6 rubbercable with 32/63 amp male euroconnector.
- » Electric linear actuator for vertical adjustment.
- » Temperature and humidity weather station.
- » Flowcontrol in 7 steps over onboard CPU.
- » Adjustable turning sector
- » Centrally sviveling water intake 2"(camlock)
- » Work light LED
- » 300 micron onboard filter.

Upgrade equipment:

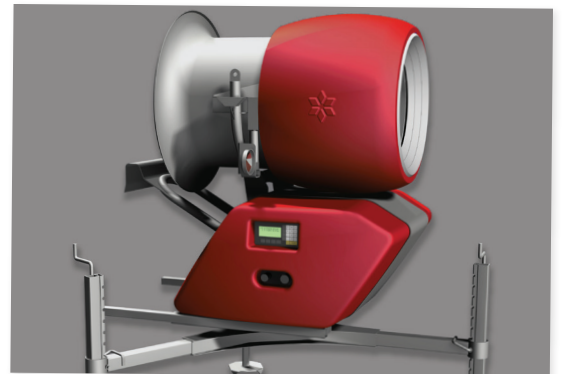
- » Tripod, tower or wheeled chassie.
- » Communication over 3G/4G net.
- » Flowcontrol hydrant for full operation with battery backup.
- » Oilfree compressor.

Electric demand:

- » 400 VAC 5 leader system with nom.rate 26 Amp/12 kw

Water demand:

- » 40-300l/min available flow from 7-35bar pressure



Features

- » Nozzles, 44 pcs brass and stainless steel,
- » Nucleators, 6pcs
- » Fan, aluminum with painted surface
- » Barrel in hotgalvanized steel.
- » Chassie PUR/ED dipped
- » Covers, ABS
- » Tripode, galvanized steel.
- » Compressor, Atlas Copco twin cylinder oil/oil free.